



# Self-Propelled Articulating Booms

## Z™ -34/22 IC

### Specifications

Models	Z-34/22 IC 2WD		Z-34/22 IC 4WD	
Measurements	US	Metric	US	Metric
Working height maximum*	40 ft 6 in	12.52 m	40 ft 10 in	12.62 m
Platform height maximum	34 ft 6 in	10.52 m	34 ft 10 in	10.62 m
Horizontal reach maximum	22 ft 3 in	6.78 m	22 ft 3 in	6.78 m
Up and over clearance maximum	15 ft	4.57 m	15 ft 1 in	4.6 m
▲ Platform length	2 ft 6 in	0.76 m	2 ft 6 in	0.76 m
▲ Platform width	4 ft 8 in	1.42 m	4 ft 8 in	1.42 m
▲ Height - stowed	6 ft 7 in	2.00 m	6 ft 9 in	2.06 m
▲ Length - stowed	18 ft 6 in	5.64 m	18 ft 7 in	5.66 m
▲ Storage height	7 ft 5 in	2.26 m	7 ft 6 in	2.29 m
▲ Storage length	13 ft 5 in	4.08 m	13 ft 6 in	4.11 m
▲ Width	5 ft 8 in	1.73 m	6 ft 1 in	1.85 m
▲ Wheelbase	6 ft 2 in	1.88 m	6 ft 2 in	1.88 m
▲ Ground clearance - center	6 in	0.15 m	6.5 in	0.17 m

### Productivity

Lift capacity	500 lbs	227 kg	500 lbs	227 kg
Platform rotation	180°		180°	
Vertical jib rotation	139°		139°	
Turntable rotation	355° non-continuous		355° non-continuous	
Turntable tailswing	zero		zero	
Drive speed - stowed	3.0 mph	4.8 km/h	3.0 mph	4.8 km/h
Drive speed - raised**	0.68 mph	1.1 km/h	0.68 mph	1.1 km/h
Gradeability - stowed***	37%		45%	
Turning radius - inside	5 ft 9 in	1.75 m	5 ft 11 in	1.80 m
Turning radius - outside	13 ft 1 in	4 m	13 ft 6 in	4.11 m
Controls	12V DC	proportional	12V DC	proportional
Tires - air-filled	9 x 14.5 in		10 x 16.5 in	rough terrain

### Power

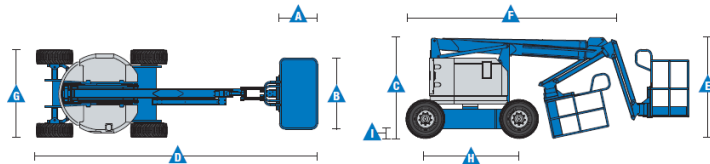
Power source	Kubota DF-972 3-cylinder gas/LPG 31 hp (23.1 kW) T4i Kubota D-1105 3-cylinder diesel, 26 hp (19.4 kW) T4f Perkins 403F-11 3-cylinder diesel, 24.6 hp (18.3k W)			
Auxiliary power unit	12V DC		12V DC	
Hydraulic tank capacity	19 gal	71.9 L	19 gal	71.9 L
Fuel tank capacity	9.3 gal	35.2 L	9.3 gal	35.2 L

### Weight\*\*\*\*

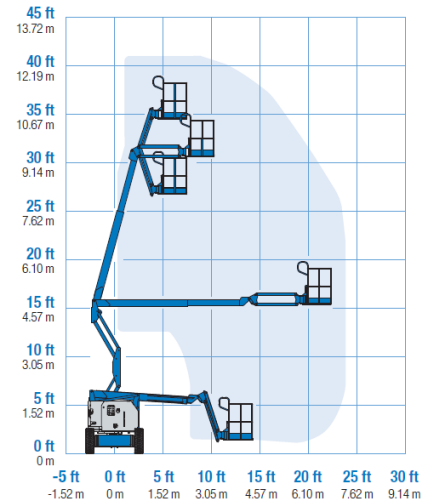
	10,150 lbs	4,604 kg	10,450 lbs	4,740 kg
--	------------	----------	------------	----------

### Standards Compliance

ANSI A92.5, CSA B354.4, EN 280, AS 1418.10



### Range Of Motion Z-34/22 IC



\*The metric equivalent of working height adds 2 m to platform height. U.S. adds 6 ft to platform height.  
\*\*In lift mode (platform raised), the machine is designed to operate on firm, level surfaces only.  
\*\*\*Gradeability applies to driving on slopes. See operator's manual for details regarding slope ratings.  
\*\*\*\*Weight will vary depending on options and/or country standards.

